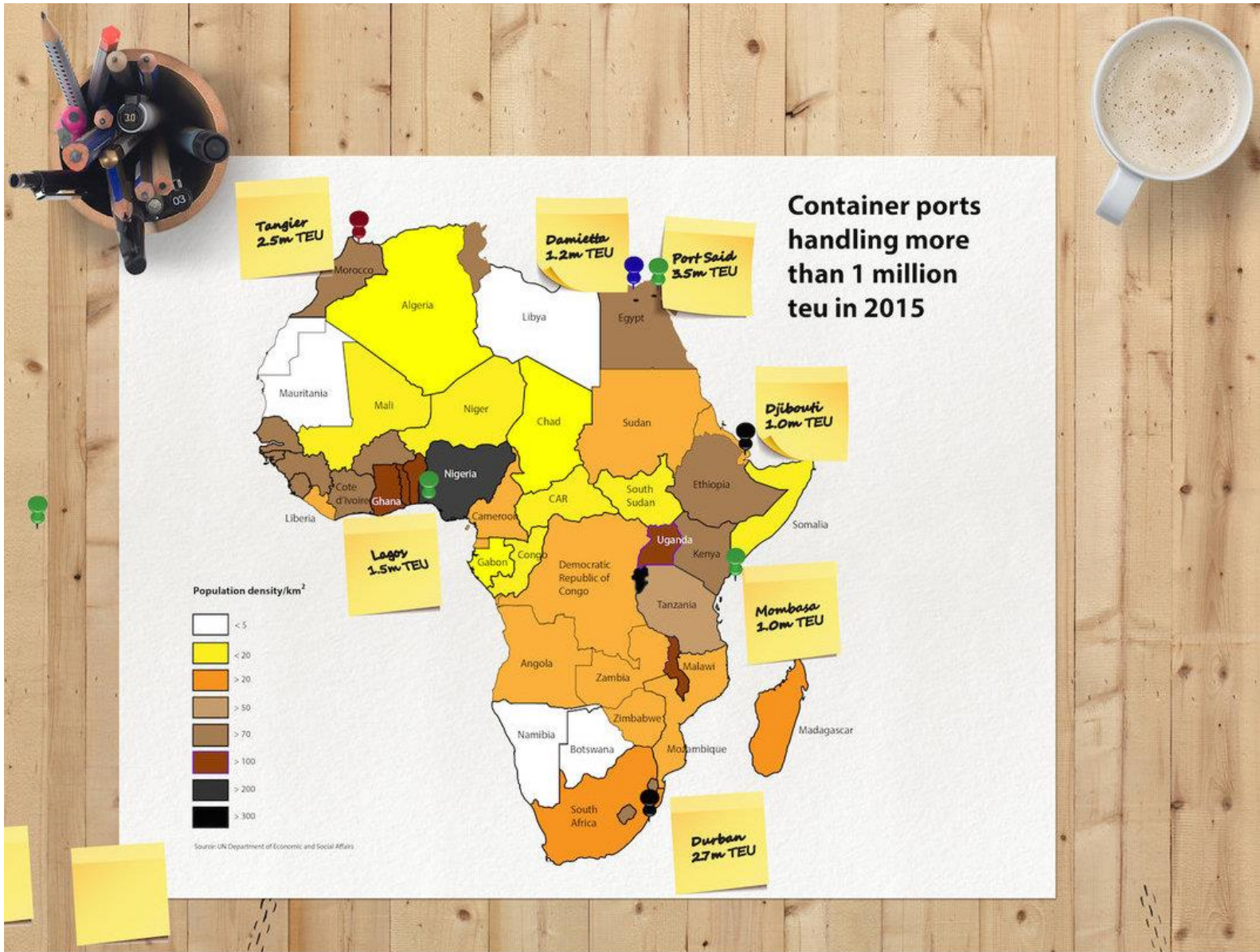
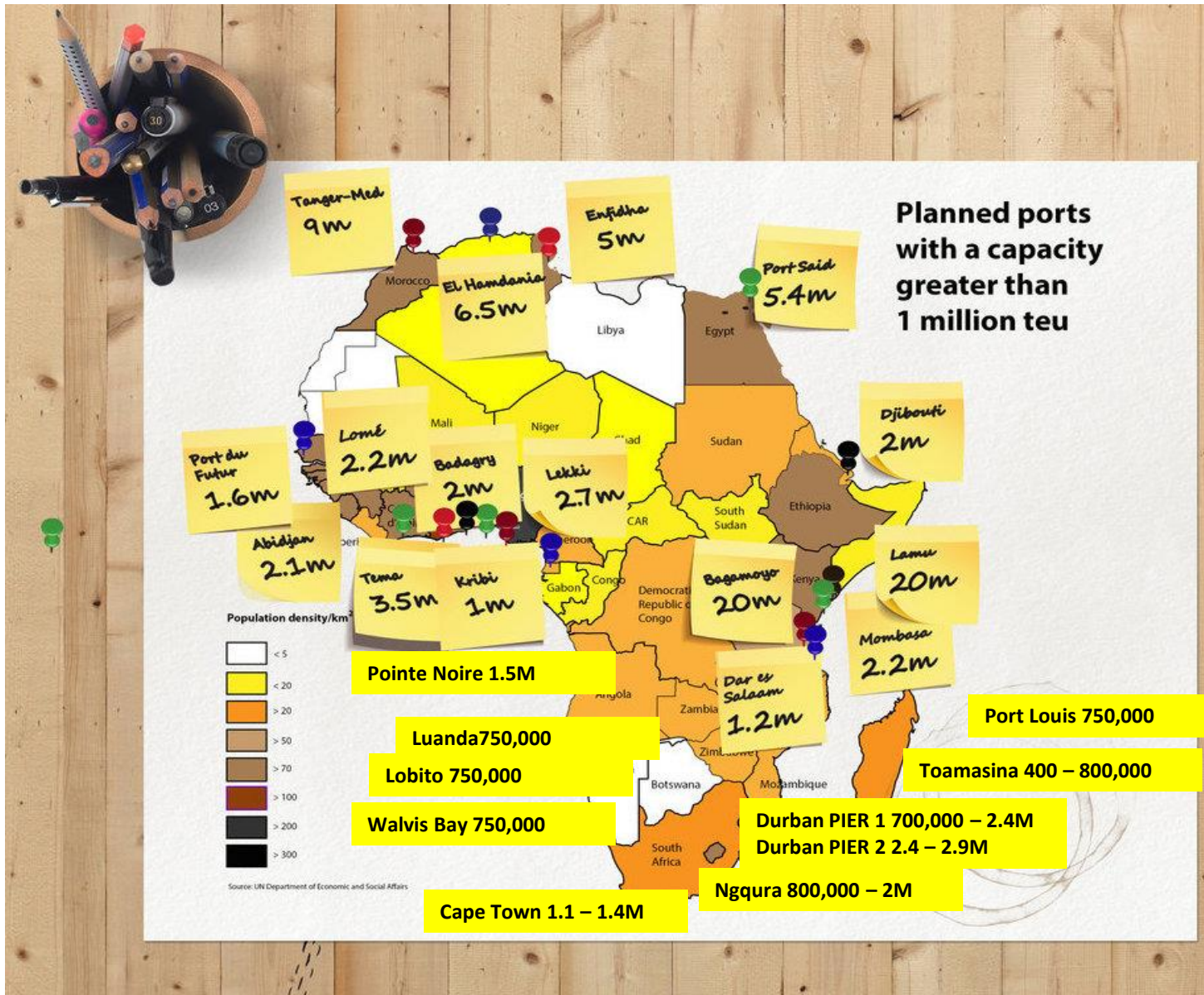




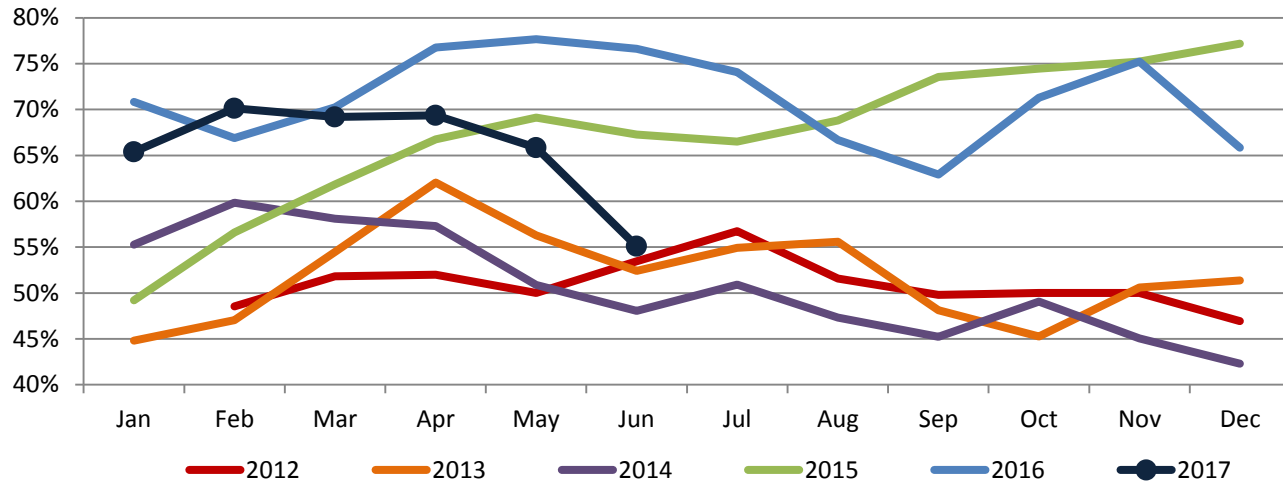
## **Victor Shieh – Managing Partner**

- **English national fluent in Spanish and Dutch with spoken German**
- **Thirty years (1987-2017) of experience based in the European shipping, ports and logistics sectors**
- **Eleven years of experience as Global PR and Communications Executive for Safmarine Container Lines (AP Moller-Maersk Group)**
- **Five years of experience advising shipowners, ship management & offshore companies, supply chain providers, African freight forwarders and international terminal port operators on internal and external communications**
- **Joint founder and Editor of [portoverview.com](http://portoverview.com), a portal monitoring African container ports**

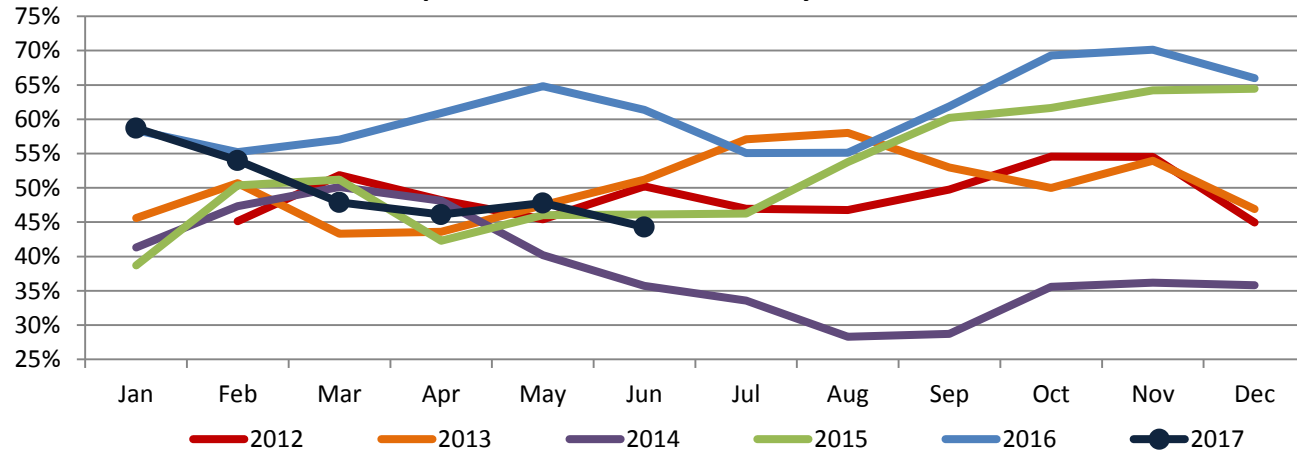




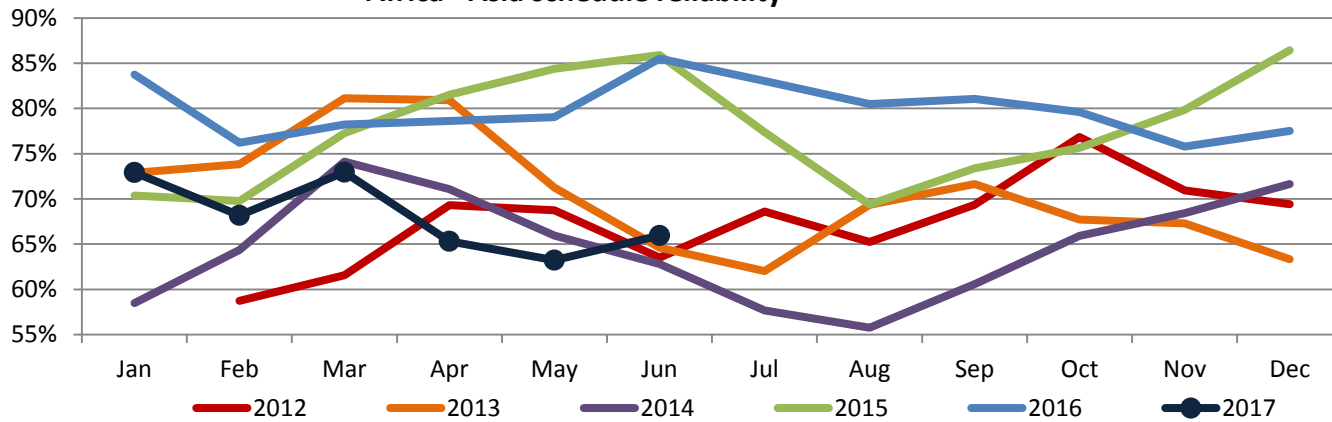
Asia - Africa schedule reliability



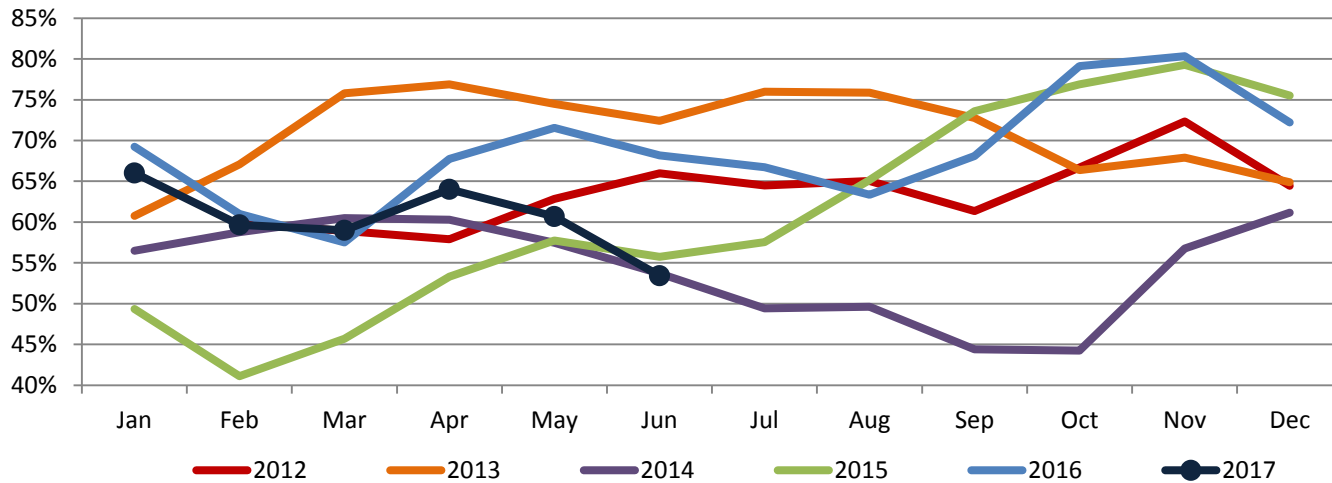
Europe - Africa schedule reliability



**Africa - Asia schedule reliability**



**Africa - Europe schedule reliability**



# Some points about the IHS Markit / JoC Port Productivity Program

- The database was started in 2009. It is growing in size and now covers about 50% of global moves. The data covers 875 terminals at nearly 500 ports globally.
- Program members account for around 75% of global container capacity and 95% of vessel capacity greater than 4,000 TEU. New carriers joining the existing twelve this year were Hyundai Merchant Marine and Bengal Tiger Line.
- Data fields currently collected:
  - > Geography: Country Name, UNLOCODE, Port Name, Terminal Name, Terminal Code
  - > Vessel: Vessel Name, Vessel IMO Number, Voyage Number
  - > Timing: Berth Arrival Date/Time, Berth Departure Date/Time
  - > Productivity: Date/Time First Lift, Date/Time Last Lift, Gross Crane Hours, Total Moves
- Program member data is blended with IHS Markit proprietary data to produce metrics which even internally some participants are not able to achieve.
- The data is kept fully confidential and redistributed to members in anonymized format for Port-to-Port, Terminal-to-Terminal and Liner-to-Peers benchmarking of many granular elements of Port Productivity. Matching the data with AIS information allows for calculation of wait times (anchorage + trip-to-berth) before vessels get on to berth.
- Aggregated data is delivered via an online tableau format or .csv / Excel format.